



## 9ft Jib Arm with Tripod

---

(P-9-TS)

### INSTRUCTION MANUAL



All rights reserved.

No part of this document may be reproduced, stored in a retrieval system, or transmitted by any form or by any means, electronic, mechanical, photocopying, recording, or otherwise, except as may be expressly permitted by the applicable copyright statutes or in writing by the publisher.

## INTRODUCTION

Some call it the money shot, we call it the Proaim 9' Jib. A sophisticated piece of engineering that is easy to use and provides amazing 'picture perfect' results. All this and more and it comes in a easy carry bag. Another smart choice for digital media shooters from PROAIM.

## IN THE BOX

Please inspect the contents of your shipped package to ensure you have received all that is pictured and listed below. The padded shipping /storage container has been especially designed to protect your purchase while in transit and is a good place to keep your 9' Jib when not in use.

## KIT CONTENTS

- Two 3.9ft sections
- Camera Platform
- LCD Mounting Arm
- Control Handle
- Locking Pin
- Jib Stand
- Tools Kit
- Packing Bag



Proaim 9ft Jib with Stand



Using the following pictures and text as a guide for set up, please follow the instructions in order of appearance.

## JIB STAND SET UP

For stability and mounting of your 9' Jib Arm on the stand, remove the stand from the case and proceed as follows:

- Loosen the lower knob 1 located at the top of the spreader legs.
- Slide the legs down the center post to the widest possible position and tighten the knob 1 to secure. A wider spread ensures more stability.
- Draw the center post up to the desired jib height and lock into place using the provided locking pin.



**ASSEMBLING THE JIB ARM**

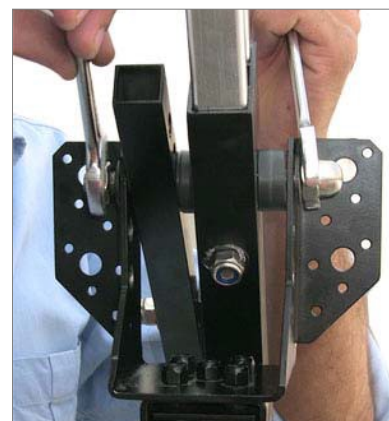
**MOUNT THE CENTRAL POST OF THE JIB ON THE STAND**

- Slide the Center Post of the Jib onto the Stand Mount and secure it with provided knob.



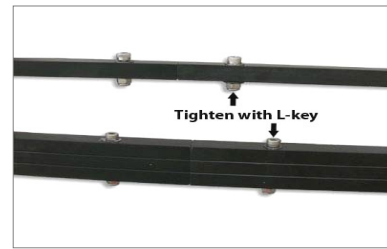
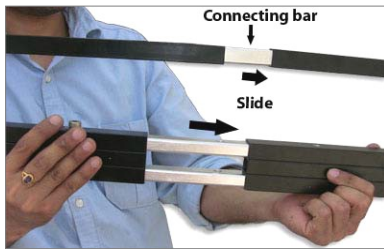
**CONNECT THE END SECTION TO THE CENTER POST**

- Attach the End section of Jib with the Center Post.
- Using a wrench, tighten the dome nut from both sides to secure the two sections.



**CONNECTING FRONT SECTION TO END SECTION**

- The front section has connecting bars attached to one end as shown. Slide the bars of end section into the slots on front section tightening the two sections together using the supplied Allen Key.
- Tighten the Allen keys as before to secure the sections. Your arm build is now complete.



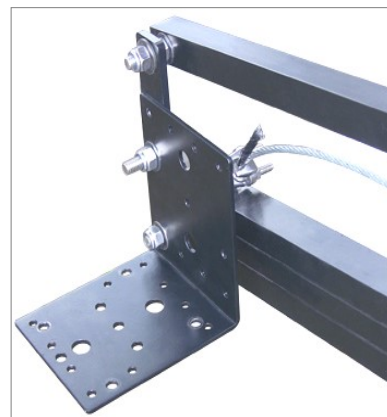
### ADDING THE COUNTER WEIGHTS

- Securing the counter weights to the Jib is accomplished by the use of the stainless steel shank. It has two lock offs, one for each side of the Arm to prevent the weights from shifting during use or accidentally falling off the jib.
- Standard exercise weights (not supplied) with a 1' hole are easily rig mountable and are used to equal the weight placed on the camera side of the Jib.
- Once you discover correct balance, consider marking the weights for that particular camera facilitating an easier set up the next time.



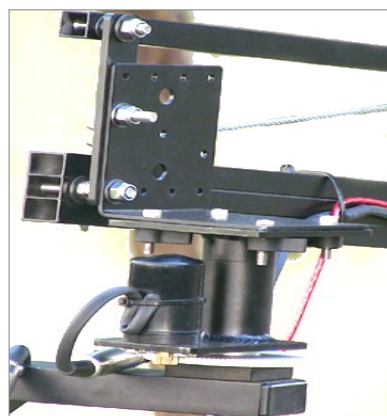
### CAMERA MOUNTING PLATE

- To accommodate various manufacturers and different sized cameras, multiple slots are provided for attachment.
- You will need to fine tune your counterweights to accommodate camera, head and other accessories being used on the Jib Arm.



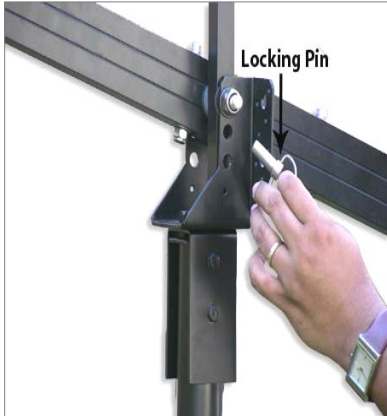
### MOUNTING THE PAN/TILT HEAD

- If you are using the remote capability of a Pan/Tilt Head, it can be easily mounted to the jib via the 4 slots located at the corners of the plate using 4 screws. **Pan/Tilt Head is not provided.**
- This assembly is usually accomplished from the underside (bottom) of the jib camera plate.



### PIN FEATURE FOR TILTING SHOTS

- Removing the locking pin on the Center Post allows the operator to frame tilting shots by use of the control handle.



- Lock the pin for keeping your camera in a fixed angle to take stable shots.



### MOUNTING A MONITOR

- Provisions for LCD monitor mounting to the Jib Arm are built in. **The monitor is not provided.**



YOUR PROAIM 9' JIB WITH STAND  
SET UP COMPLETED AND GOOD TO GO



SHOWN WITH OPTIONAL ACCESSORIES

## WARRANTY

We offer a limited time warranty for our products. For Mechanical products we provide a 6 month warranty & for electronic products we provide a 3 month warranty from the date of purchase.

We will repair or replace your product, free of charge, in the event of a defect in materials or craftsmanship obtained during normal use or handling based on the user manual. Please note that we will not cover any shipping costs for returning the product to us. If any VAT or import duties are applied to the return, we will also charge these costs to the customer.

The warranty does not include, by the way of example, damage caused by products that we do not supply or from mishandling in transit, accident, misuse, neglect, lack of care of the product , or service by anyone other than our company.

We are not liable for incidental or consequential damages resulting from the use of the unit or occurring due to any breach of this warranty.

Replacement parts of the product will be provided at nominal cost (covering the cost price of the replacement parts only) to the customers after the Warranty Period has expired. We will cover the complete cost of sending replacement parts within the warranty period. After that, Nominal cost of the product & Actual shipping cost will be charged.

Do not send the unit to us without first getting a response and getting the approval to send back the item.

In case of any kind of dissatisfaction, we urge you to **Contact us** immediately and we shall do our best to help you out.

For any other assistance you can reach us via email.